

INDUSTRIAL CANNABIS GRINDER MANUAL

SECTIONS

GENERAL INFORMATION	- Page 1
CHECKING PACKAGE UPON ARRIVAL	- Page 1
SAFETY AND PRECAUTION	- Page 2
UNBOXING AND ASSEMBLE	- Page 2
CLEARING A JAM	- Page 3
MAINTENANCE AND CLEANING	- Page 4
SCREEN REMOVAL AND REPLACEMENT	- Page 4
ASSEMBLE EXPANDED VIEW DRAWING	- Page 5
UNIT INFORMATION	- Page 6
WARRANTY REGISTRATION/RETURNS	- Page 6

GENERAL INFORMATION

Custom Cones USA would like to thank you for purchasing this machine. It's of the utmost importance to save these instructions for future reference. Also save the original box and packaging for shipping of the equipment if servicing or returning of the machine is required.

Custom Cones USA is NOT responsible for any harm or injury caused due to any person's improper or negligent use of this equipment. The product shall only be operated by someone over the age of 18, of sound mind, and not under the influence of any drugs or alcohol.

Any modification to the machine voids any warranty and may cause harm to individuals using the machine or in the vicinity of the machine while in operation. Following procedures outlined in this manual will assure long and continuous trouble-free operation.

CHECK PACKAGE UPON ARRIVAL

Upon receipt of the Industrial Grinder shipment, please inspect for external damage. If no damage is evident on the external packaging, open carton to ensure all ordered items are within the box, and there is no concealed damage to the machine. Only use handle to unpack machine, NEVER move by holding onto the pan.

If the package has suffered rough handling, bumps or damage (visible or concealed), please note it on the bill of lading before accepting the delivery and call 833-582-6637 within 24 hours, so we may initiate a claim with the carrier.

A detailed report on the extent of the damage caused to the machine must be filled out within three days, from the delivery date shown in the shipping documents. Custom Cones USA has no recourse for damaged products that were shipped collect or third party.

Before operating any equipment, always read and familiarize yourself with all operation and safety instructions.

SAFETY AND PRECAUTION

This product is intended for commercial application. When using electrical appliances, basic safety precautions should always be followed including the following:

- BEFORE USE READ ALL INSTRUCTION PRIOR TO USE
- Only use handle to pick up and move grinder NEVER pick up or move machine by the pan.
- Before plugging in, ensure the switch is off. Only plug machine into 110v outlet.
- To protect against the risk of electrical shock do not put grinder in water or other liquid. Do NOT use outdoors, indoor use only.
- Close supervision is necessary when any appliance is used near children. NOT to be used by children.
- Unplug cord from the outlet when not in use or before putting ON or taking OFF parts, and before cleaning.
- Avoid contact with moving parts. Never insert anything other than product into chute.
- Do NOT operate grinder with a damaged cord or plug or after the appliance malfunctions or is dropped or damaged in any manner. If grinder needs to be returned for any reason call 360-335-3938 for instructions on returning unit.
- When carrying the unit, be sure to hold motor housing with both hands.
- To avoid jamming, do not force or apply pressure, allow product to feed by gravity only. If the unit jams for whatever reason, switch off immediately and clean the unit (see Clearing a Jam).
- Air vents at the bottom and the rear of the motor housing must be kept free of obstructions.
- If the unit overheats a built in thermo switch will trip and stop machine. Allow motor to cool before restarting. (Approximately 30 minutes).
- Do not use products with large stems.
- After use, switch off and unplug. Clean the grinder after each use.
- Never force product down chute, allow gravity to feed product.
- SAVE THESE INSTRUCTIONS

UNBOXING AND ASSEMBLE

- See video here for visual information and instructions: <https://www.youtube.com/watch?v=u78SEjzGXEE&t=1s>
- Machine must be assembled prior to use. Unbox all components and start with outer barrel/feeder shot assemble. Slides assemble over barrel adapter flange and align tightening knob screw with the dimple in the adapter. Hand tighten knob by hand only to a firm position if knob is not tightened enough this can loosen during operation. Check this knob on a regular basis during operation to ensure a firm tight condition.
- Next install the blade holder shaft thru the barrel opening and rotate assemble until the blade holder slides over the output shaft of the motor. When blade holder is properly installed the edge of the blades should be approximately a 1/16 inch from the adaptor face.
- Next install the end cap bearing assemble. Slide bearing onto the blade holder shaft, the end cap will be tight against the barrel if the blade holder has been properly installed. If the end cap doesn't butt up against the barrel re-check the blade holder for proper interface with the motor drive shaft. Tighten the locking knob by hand to a firm tight position.

- Lastly place pan inside of the feeder shoot and hand tighten pan locking clap knob to hold pan in place.
- Machine is supplied with a 6 quart plastic container that is designed for use with this machine. To place the 6qt container under the cutting attachment slightly tilt the motor up by handle and slide the container under the cutter attachment. Make sure container is tight against the face of the motor, this will insure no leakage occurs during the grinding operation. See illustration for proper placement of container.



CLEARING A JAM

- Turn the machine off and unplug from the electrical outlet.
- Remove pan, loosen and remove end cap, remove blade holder. If it is not possible to removed blade holder, remove barrel by releasing barrel clamp screw and turn assembly upside down and try to dislodge jam by turning blade holder in opposite direction of normal operation this should loosen up the jam.
- Reassemble machine and return to normal operation.

MAINTENANCE AND CLEANING

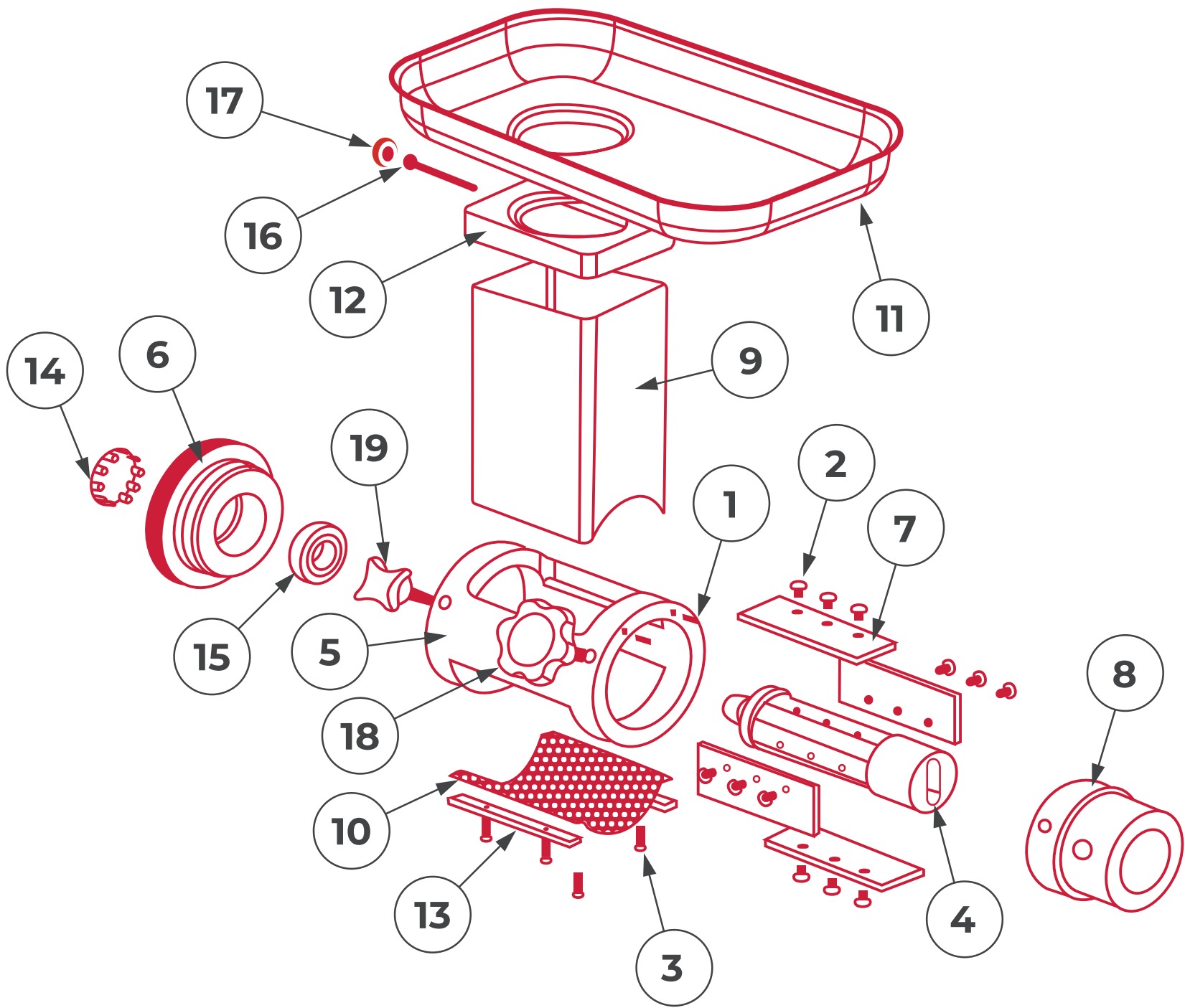
- See video here for visual cleaning instructions: <https://www.youtube.com/watch?v=CeixcoCsWDc>
- Make sure that the motor has stopped completely. Disconnect the plug from the power outlet. Disassemble by reversing the assembly steps.
- First remove end cap by loosening knob clamping screw. Pull out cutting blades.
- Loosen barrel tighter knobs and remove.
- Do NOT immerse end cap in cleaning solution or water as this can damage bearing located in end cap. Wipe down and clean end cap only with a clean cloth.
- Remaining parts can be cleaned with soft bristle brush and hot water. A solution of Dawn dishwashing soap and hot water work very well if parts are cleaned immediately after use. If product is allowed to dry, cleanup will become much more difficult.
- Do NOT immerse the motor housing in water, as this will cause malfunction. Only wipe it with a damp cloth.
- Metal parts of the cutting attachment are suitable for the dishwasher, except bearing end cap.
- **The machine should have a lifetime supply of oil. Make sure to keep the bolt on the top of the motor tight to avoid any leakage. In the unlikely event you need to add oil, use 90W gear lube.**

SCREEN REMOVAL AND REPLACEMENT

- Screens with 3 different size holes are supplied with the grinder. Depending on final particular size selection of screen size needs to be determined by user.
- To replace screen, first remove pan.
- Remove grinder attachment by first removing end cap, by loosening small locking knob. Now remove end cap.
- Pull out blade holder.
- Loosen large locking knob, remove cutting barrel.
- Turn grinder upside down with screen facing up. (See ILLUSTRATION on next page)
- Loosen 4 clamp screws and remove screw and replace with desired screen. Replace clamps and tighten clamp screws. Reassemble to return to normal operation.



ASSEMBLE EXPANDED VIEW DRAWING



ITEM	PART NUMBER	QTY	DESCRIPTION
1	FA-0002	2	8 - 32 x 1/2 Alloy Steel Cone Point Set Screw
2	FA-0003	12	10 - 32 x 1/2 Button Hex Head
3	FA-0004	4	8 - 32 x 1/2 SHCS
4	MS-0022-D	1	Blade Holder
5	MS-021-B	1	Cutting Barrel
6	MS-023-B	1	End Cap
7	MS-024-B	4	Cutting Blades
8	MS-025-D	1	Barrel Adapter
9	MS-026-B	1	Feeder Shoot
10	MS-027-B	1	Screen
11	MS-028-A	1	Pan
12	MS-030-B	1	Pan Adapter
13	MS-031-B	2	Screen Mounting Cap
14	MS-032-A	1	Dust Cover - McMaster-Carr 9563K49 or Equiv
15	MS-034-A	1	Main Shaft Bearing - SS 1635-2RS
16	MS-038-A	1	10 - 32 x 2 SS SHCS
17	MS-039-A	1	Plastic Grip Knob - McMaster-Carr 94052A031
18	MS-040-A	1	Knob 12 x 1.75 Threaded
19	MS-041-A	1	Knob MB x 1.25 - McMaster-Carr 6390K530

UNIT INFORMATION

- 110V AC, 60Hz, 750W
- Model Name: Industrial Cannabis Grinder
- SKU: 0305-01306000000

WARRANTY AND RETURNS

- 1 YEAR PARTS AND LABOR BENCH WARRANTY
- Within the warranty period, call 833-582-6637 to get a return authorization.
- Unauthorized maintenance will void the warranty.
- Warranty covers electrical and part failures, not improper use.



INDUSTRIAL GRINDER

SPARE PARTS

IMAGE	SKU	PRODUCT NAME	PRODUCT DESCRIPTION	LINK	PRICE
	0305-08706000000	Industrial Cannabis Grinder Motor	Motor Replacement for the Industrial Cannabis Grinder	VIEW ONLINE	\$699.99
	Pre-Owned 959-08702457000	Pre-Owned Industrial Cannabis Grinder Motor	Motor Replacement for the Industrial Cannabis Grinder	VIEW ONLINE	\$549.99
	0305-08306000000	Small-Particulate Grinder Screen	Good For Particle Size: 4mm	VIEW ONLINE	\$149.99
	Pre-Owned 959-8302457000	Pre-Owned Small Particulate Grinder Screen	Good For Particle Size: 4mm	VIEW ONLINE	\$135.99
	0305-08406000000	Medium-Particulate Grinder Screen	Good For Particle Size: 5.5mm	VIEW ONLINE	\$149.99
	Pre-Owned 959-8402457000	Pre-Owned Medium Particulate Grinder Screen	Good For Particle Size: 5.5mm	VIEW ONLINE	\$135.99
	0305-08506000000	Large-Particulate Grinder Screen	Good For Particle Size: 6mm	VIEW ONLINE	\$149.99
	Pre-Owned 959-8502457000	Pre-Owned Large Particulate Grinder Screen	Good For Particle Size: 6mm	VIEW ONLINE	\$135.99
	0305-01406000000	Shredder Housing	Shredder Housing Replacement for the Industrial Cannabis Grinder	VIEW ONLINE	\$499.99
	Pre-Owned 959-1402457000	Pre-Owned Shredder Housing	Shredder Housing Replacement for the Industrial Cannabis Grinder	VIEW ONLINE	\$449.99
	0305-08806000000	Housing Cap & Bearing	Stainless Steel Housing Cap & Bearing Replacement for the Industrial Cannabis Grinder	VIEW ONLINE	\$399.99
	Pre-Owned 959-8802457000	Pre-Owned Housing Cap & Bearing	Stainless Steel Housing Cap & Bearing Replacement for the Industrial Cannabis Grinder	VIEW ONLINE	\$349.99



INDUSTRIAL GRINDER

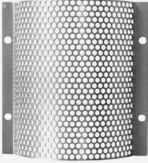

SPARE PARTS

IMAGE	SKU	PRODUCT NAME	PRODUCT DESCRIPTION	LINK	PRICE
	0305-09006000000	Grinder Blade	Blade Set Replacement for the Industrial Cannabis Grinder	VIEW ONLINE	\$399.99
	Pre-Owned 959-9002457000	Pre-Owned Grinder Blade	Blade Set Replacement for the Industrial Cannabis Grinder	VIEW ONLINE	\$359.99
	0305-09206000000	Container Attachment	Container Attachment Replacement for the Industrial Cannabis Grinder	VIEW ONLINE	\$199.99
	Pre-Owned 959-9202457000	Pre-Owned Container Attachment	Container Attachment Replacement for the Industrial Cannabis Grinder	VIEW ONLINE	\$179.99
	0305-09106000000	6-Quart Container & Lid	Container & Lid Replacement for the Industrial Cannabis Grinder	VIEW ONLINE	\$24.99
	0305-08906000000	Hopper Pan	Hopper Pan Replacement for the Industrial Cannabis Grinder	VIEW ONLINE	\$199.99



INDUSTRIAL GRINDER

ATTACHMENTS/ADD-ONS

IMAGE	SKU	PRODUCT NAME	PRODUCT DESCRIPTION	LINK	PRICE
	0305-11206000000	Extra Small-Particulate Grinder Screen	Good For Particle Size: 3mm Parts Needed: Industrial Cannabis Grinder	VIEW ONLINE	\$149.99
	Pre-Owned 959-11202457000	Pre-Owned Extra Small Particulate Grinder Screen	Good For Particle Size: 3mm Parts Needed: Industrial Cannabis Grinder	VIEW ONLINE	\$135.99
	0305-14806000000	Bucket Chute	The bucket chute attachment allows you to grind your material into a larger container, rather than having to continually swap out the smaller 6-quart container. Parts Needed: Industrial Cannabis Grinder	VIEW ONLINE	\$399.00